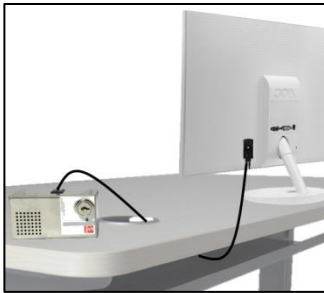


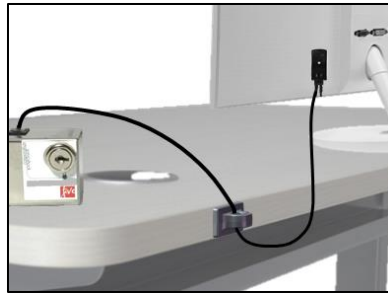
# PC Tab Blast Alert Installation

The Blast Alert box does not need to be permanently mounted to anything. Just run any sensor wire through a hole that is smaller than the Blast Alert box to prevent a thief from taking the Blast Alert along with your equipment without unplugging it.

**Option 1:** Run any Sensor wire through a data hole.



**Option 2:** Run any Sensor wire through a glue-on attachment. (sold separately)



**Option 3:** Run any Sensor wire around an object using the included 2-hole bracket.



If these options don't work for you and you must permanently mount the Blast Alert, you can drill holes through the base plate and screw it into your desk, or you can purchase 2-part epoxy (sold separately) to mount the base plate.

## Step 1 – Attach the Sensors to your Equipment

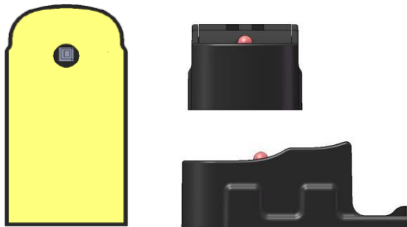
If you are protecting an entire row of equipment, it's easiest to run all the sensor wires where you want them and plug all the sensors into each other before you start sticking the sensors onto the equipment.

### Sensor with Tape

Make sure the surface you wish to apply the sensor to is clean and dry.

**NOTE: If you use a cleaner or alcohol to clean the intended area, you must wipe it dry with a clean cloth, do not let it dry or it will leave a residue.**

Peel off the protective cover from the back of the sensor's tape and apply the sensor to your equipment. Apply pressure **FIRMLY** throughout the whole sensor. The amount of time you hold it does not matter, but the harder you press the better it will bond over the next 24-hours.



#### **IMPORTANT NOTE:**

*You must apply the tape at room temperature. Do not apply the tape to hot surfaces. If the surface is hot, shut down the equipment and let cool for 20 minutes before applying the tape. If the room has very high humidity, you may have trouble getting the sensor to stick initially. If this happens, please try to use an air conditioner or wait until the humidity drops. Once the sensor is installed, the humidity will not cause problems and the tape can withstand sustained temperatures of up to 160°F.*

### Sensor with Plate

If you selected the more permanent Glue-on Plate instead of the 3M tape, it is important to glue the plate onto your equipment without the sensor attached to the plate. Put 6 small drops of glue on the back of the plate. Spread it with applicator tip, without getting too close to the tamper switch hole. Hold it on the equipment to be protected with light, steady pressure for 30 seconds (keep your fingers away from the edges to avoid getting glue on your skin).

**\*\*IMPORTANT\*\* Let dry for a minimum of 1 hour before snapping on the sensor.**

(If any wet glue gets on the tamper switch on the back of the sensor, it WILL ruin the sensor and the alarm will never go off).

**Once glued on, the plate is permanent.**



You must hook the bottom of the sensor onto the bottom on the glue-on base plate at an angle as shown here **BEFORE** you snap the top of the sensor onto the plate.



**WARNING:** Make sure the tamper switch on the back of the sensor doesn't fall into a hole or indent on the equipment or the Blast Alert will not be able to arm itself.

## Step 2 – Connect Your Wires to the Blast Alert

Plug the RJ-11 Adapter into the Blast Alert and plug the first Sensor into this Adapter. Then make certain the Terminator is plugged into the last Sensor in line.



## Step 3 – Put the Back Cover on the Blast Alert

Slide the Blast Alert onto the base at the lock side first, then lay it down and slide toward the lock side. The lock won't lock until you slide it into position.



## Step 4 – Arm the Blast Alert

All Wires must be plugged in and all Sensors must be installed on your equipment (or you at least must be holding down the tamper switch on the back of the Sensor) before the Blast Alert can be armed. Simply turn the key to arm it. Test it by unplugging any wire, but make sure you are ready to disarm it with the key because the siren is EXTREMELY loud!

## To Replace a Sensor

Both types of sensors can be re-used on new equipment; you just need to replace either the tape or the plate. These can be purchased separately.

### Sensor with Tape

Carefully pry the Sensor from the equipment. Peel off the old tape, being careful not to break the tamper switch. Apply the new tape with firm pressure. **\*\* Make sure the hole in the tape is centered over the tamper switch. If the tape is touching the tamper switch, the alarm system will be ineffective.\*\***



### Sensor with Plate

To remove the sensor from the base plate, slide a thin screwdriver down behind the top of the sensor to press on the hidden clasp and gently pull the sensor away from the plate. The plate is a permanent attachment and cannot be removed. Purchase a replacement plate for the new equipment for use with the existing sensor.

