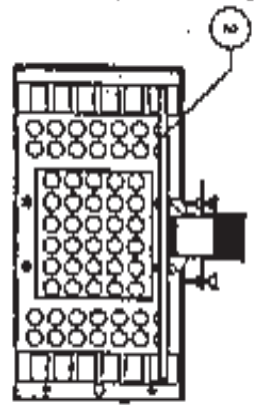
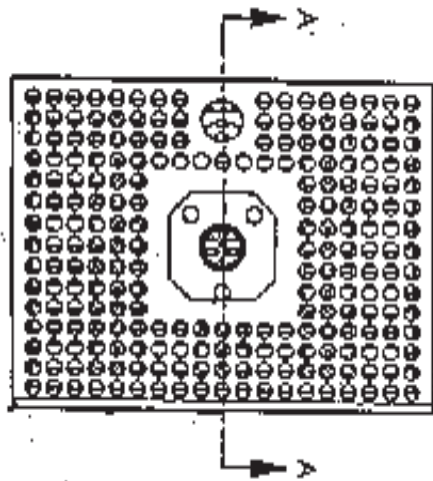




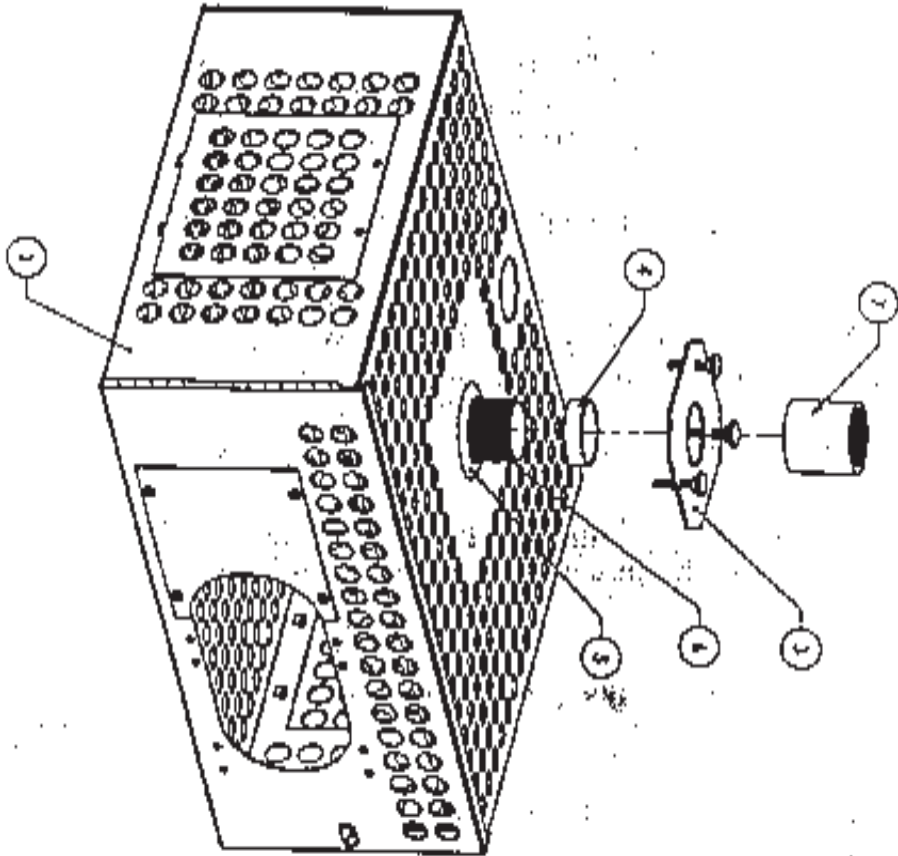
Computer Security Products Inc.

Universal Projector Enclosure Installation Instructions

1. Remove hardware and packing material from Enclosure (or camera cage as assembly #1)
2. Remove security screws from front gate - open and remove shelf #2 from enclosure.
3. Attach coupler #7 to pole - drill and tap for security - also - if possible drill and tap pole at ceiling mount with security screw provided.
4. Adjusting sphere #5 attaches inside Enclosure to the 1 1/2" nipple with the spacer #4 and adjusting plate #3 on to of Enclosure.
WARNING: For safety and security - you **MUST** apply Loctite glue to the adjusting sphere #5 and nipple.
5. Insert thumbscrews to adjusting plate #3.
6. Attach LCD projector inverted to bottom shelf #2 to a desired location (feet may be used for mounting or attach by using the existing mounting holes on the projector).
7. Insert shelf #2 to desired location in the Enclosure.
8. Security adjustable front door cover to inside of front gate (left side or right side to front oval opening).
9. Close front gate and install security screws and Discus lock to Enclosure.
10. Adjust Enclosure with thumbscrews to desired pitch and yaw.



SECTION A-A
SCALE 1:3



ITEM NO.	QTY	PART NO.	DESCRIPTION
1	1	000-D-109-1	CAMERA CASSEASSEMBLY
2	1	000-D-109-5	ADJUSTABLE SHUT
3	1	000-D-109-4	TOP ADJUSTING PLATE
4	1	000-D-109-T	SPACER
5	1	000-D-108	SPHERE ADJUSTING
6	1	CLOSE NIPPLE 1.35	PIPE NIPPLE
7	1	COUPLING 1.35	PIPE COUPLING